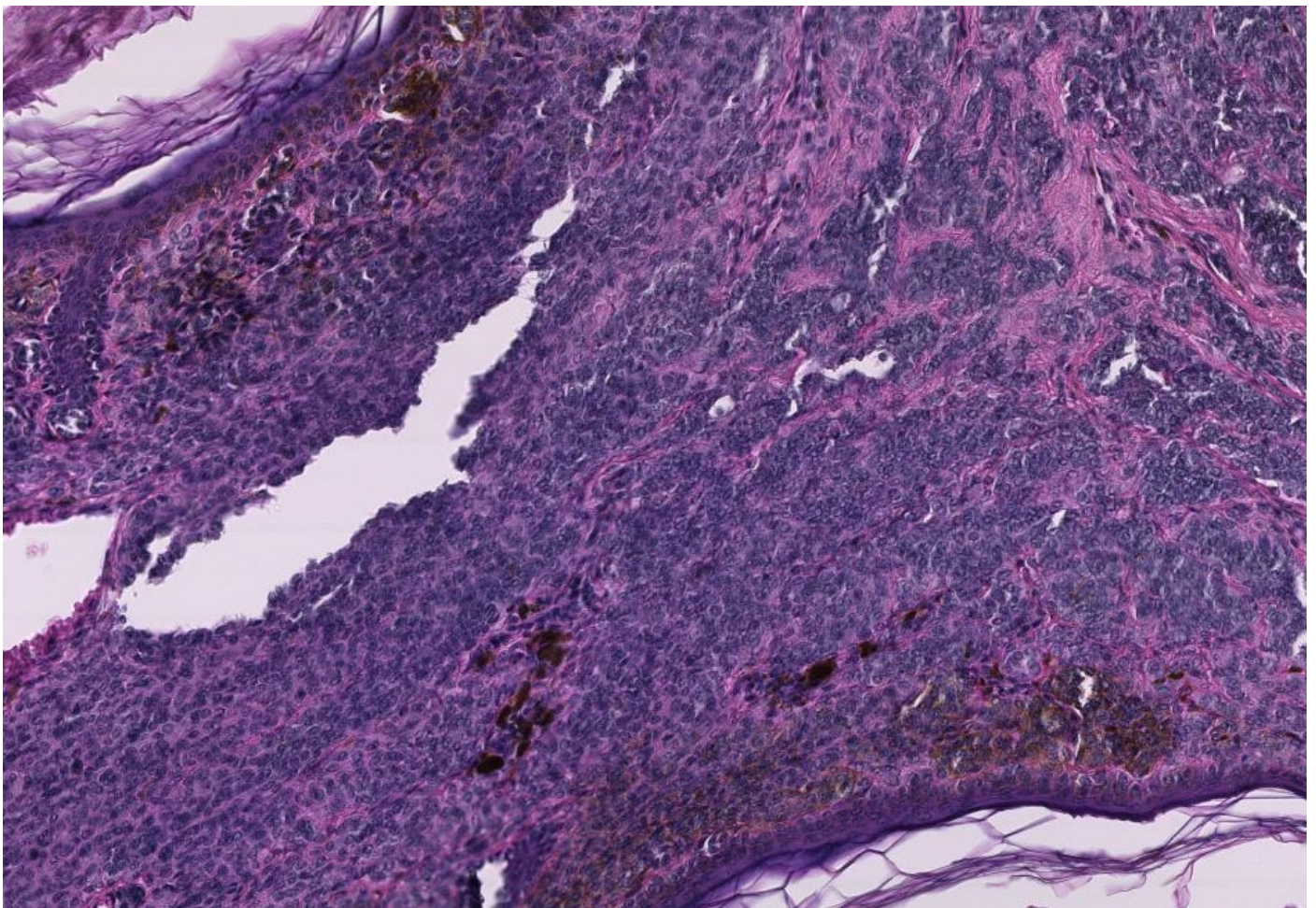
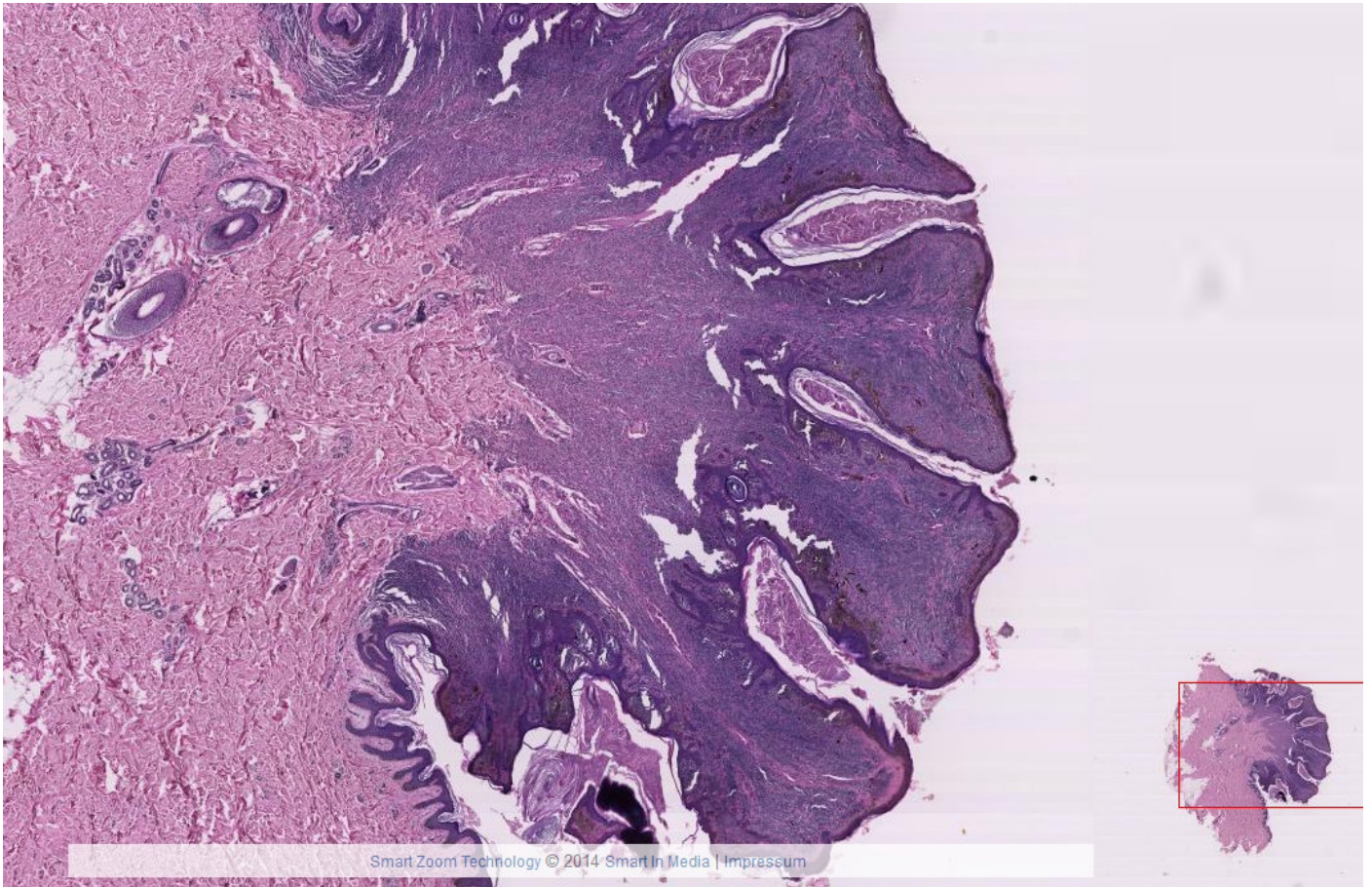
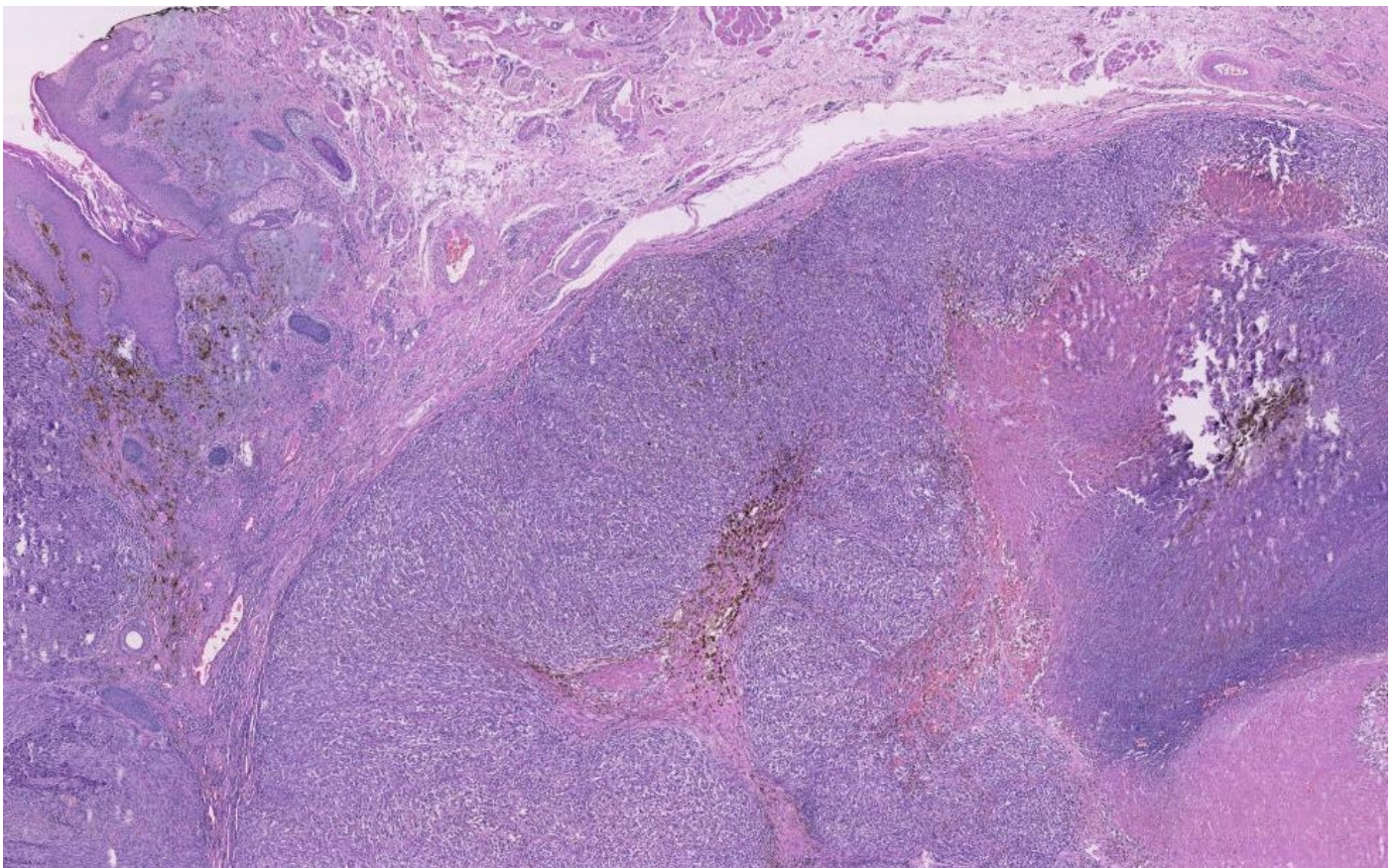
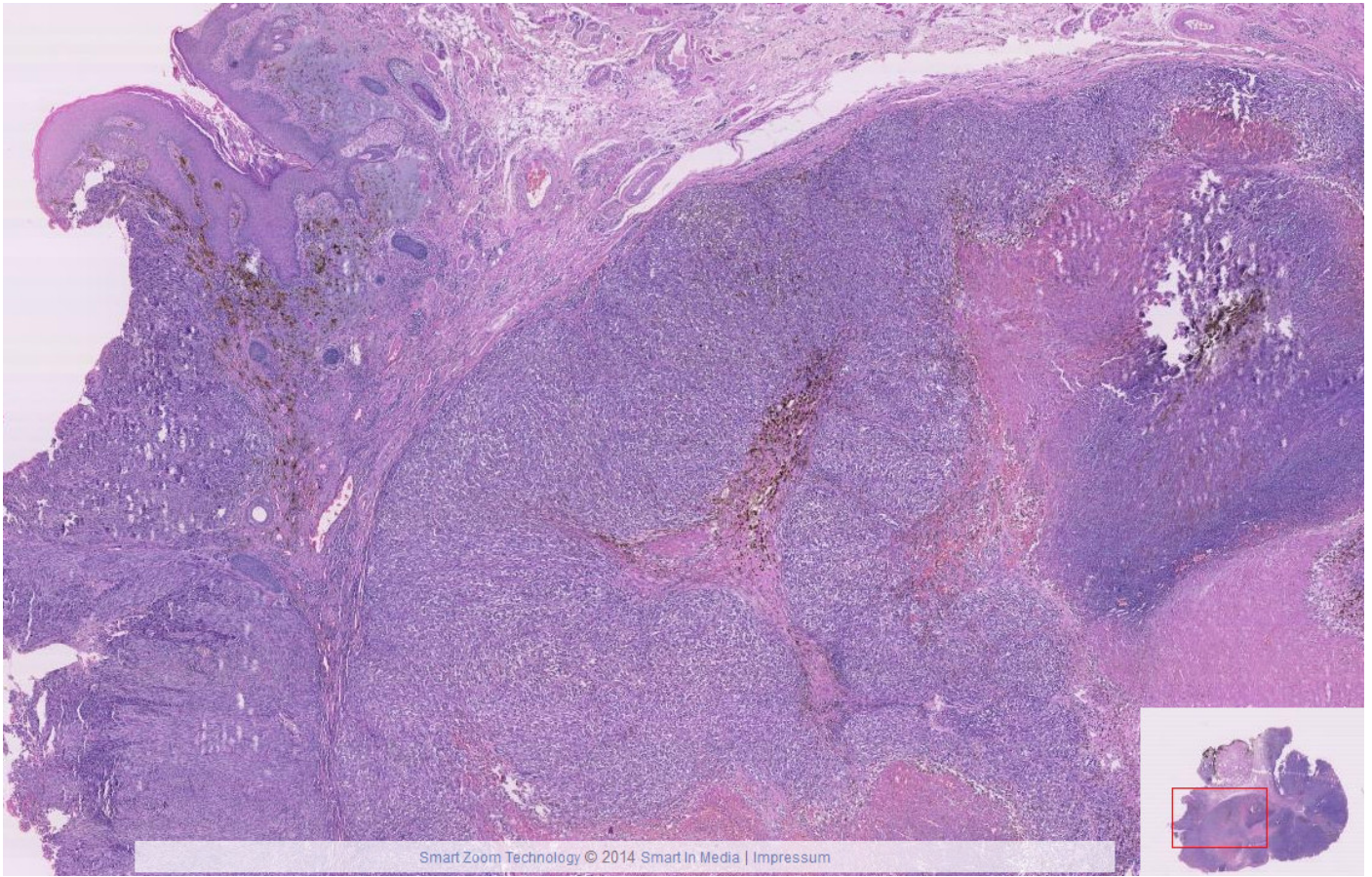
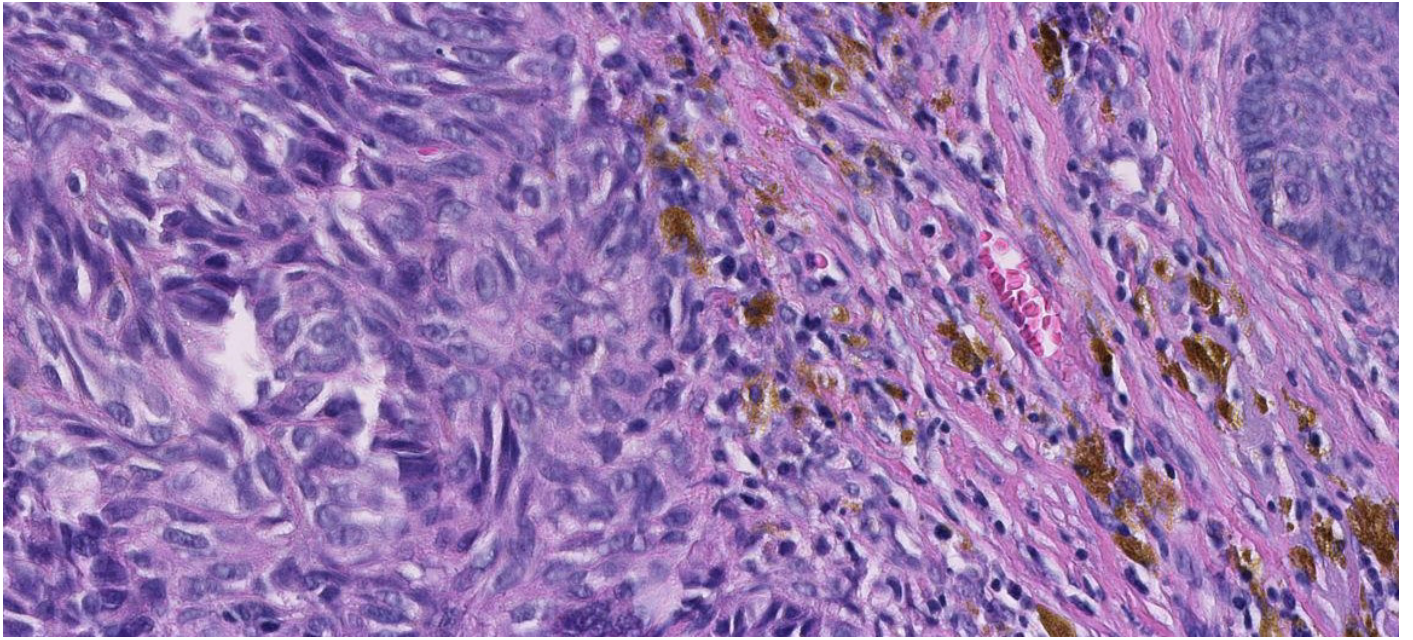


X -1 Naevuszell-Naevus(Haut)

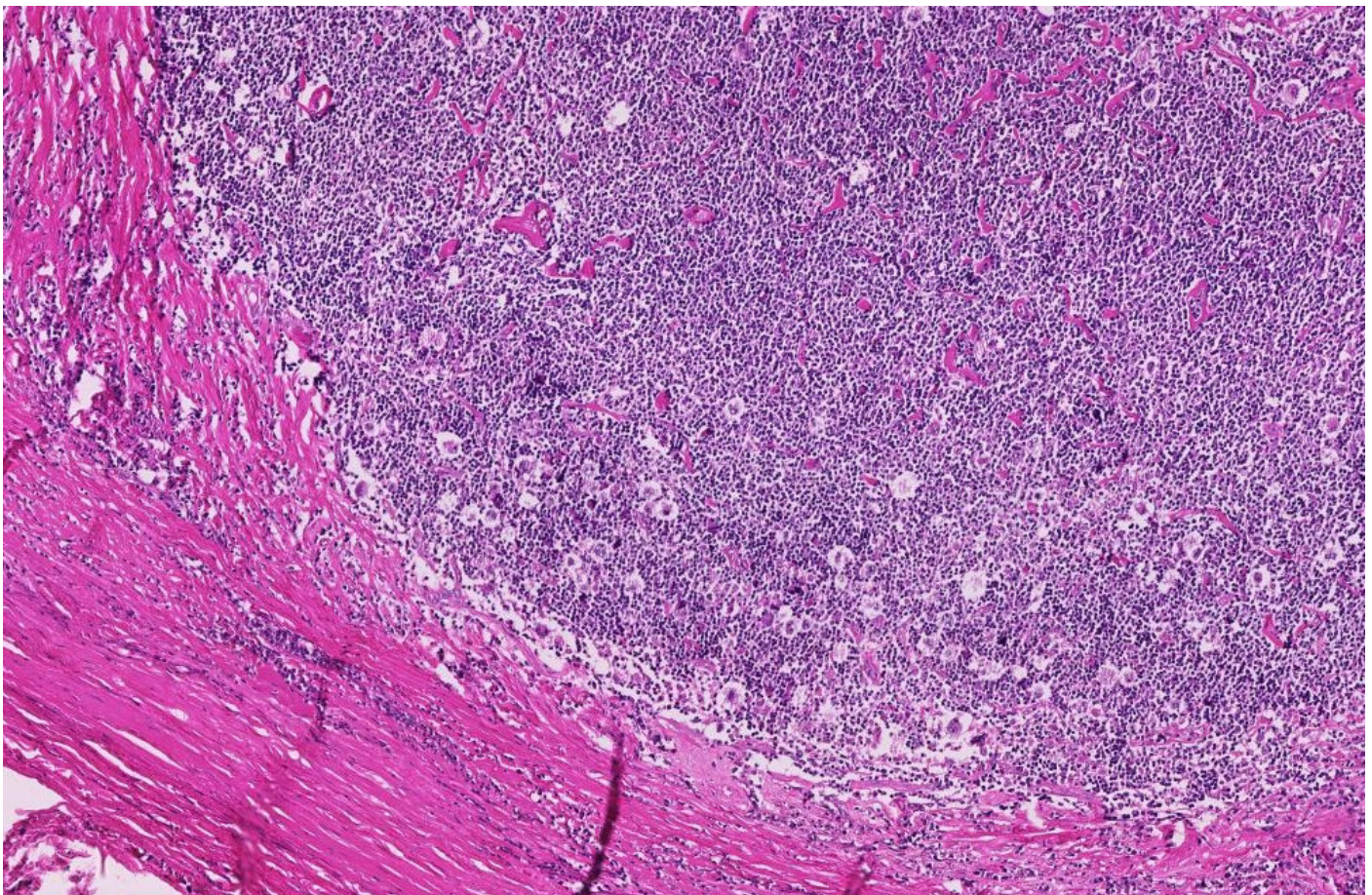
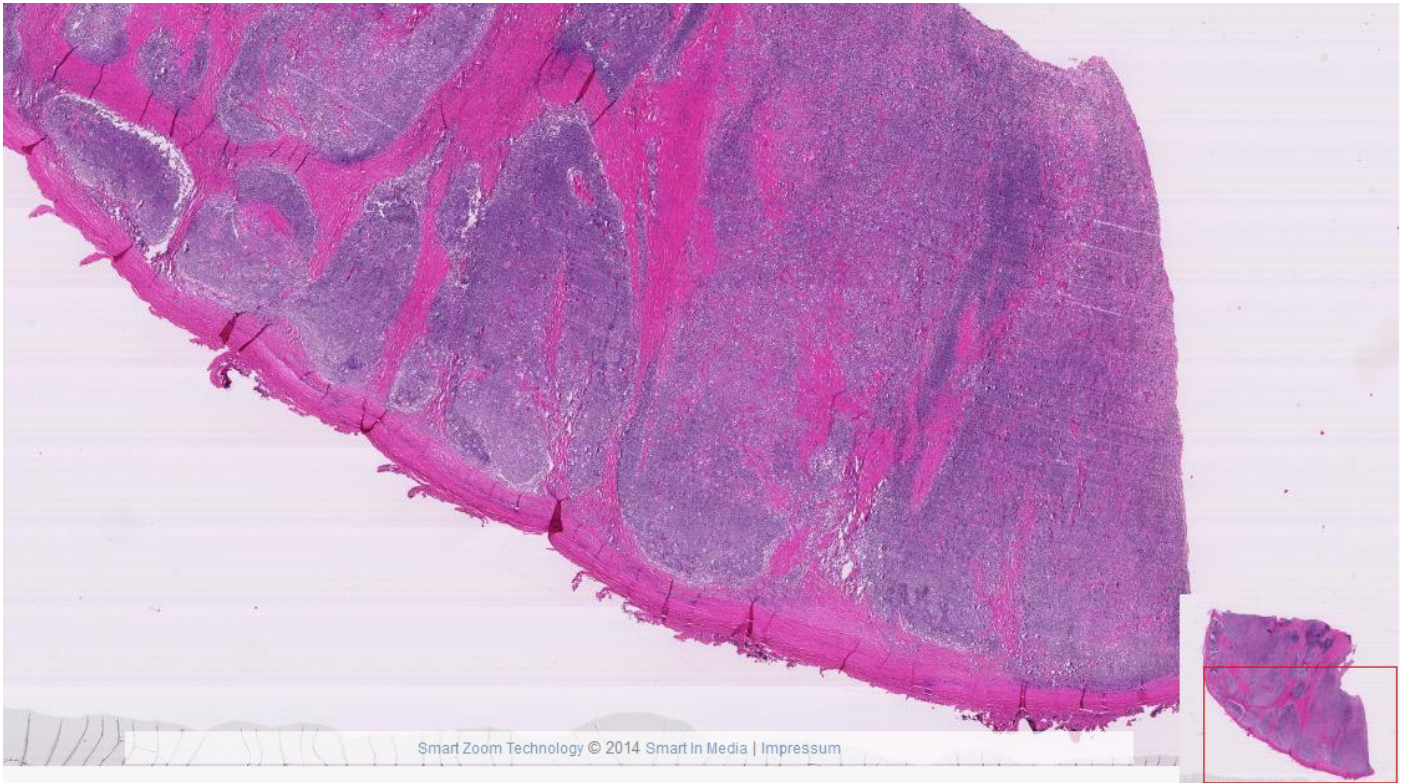


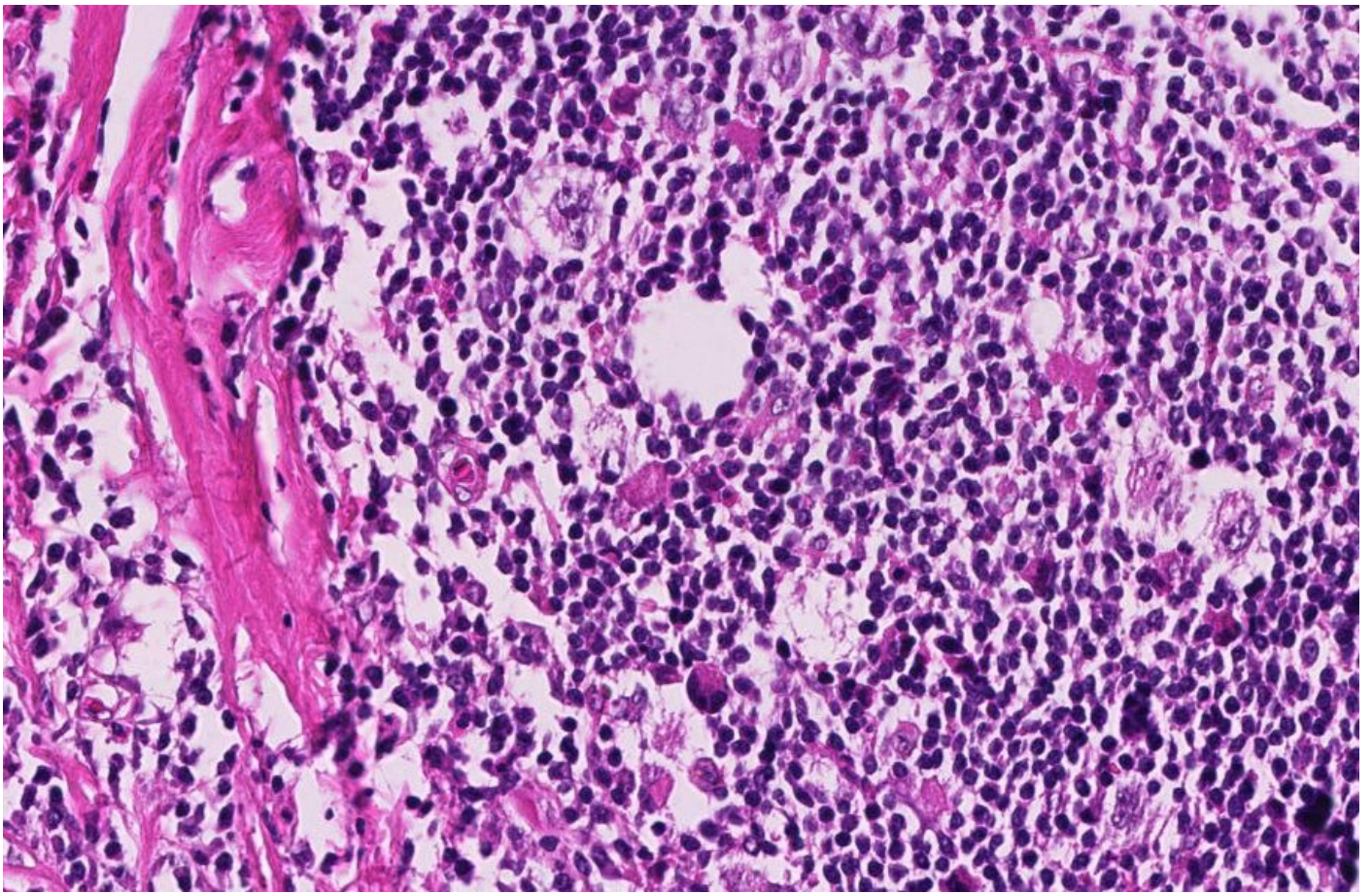
X-2 Malignes Melanom(Haut)



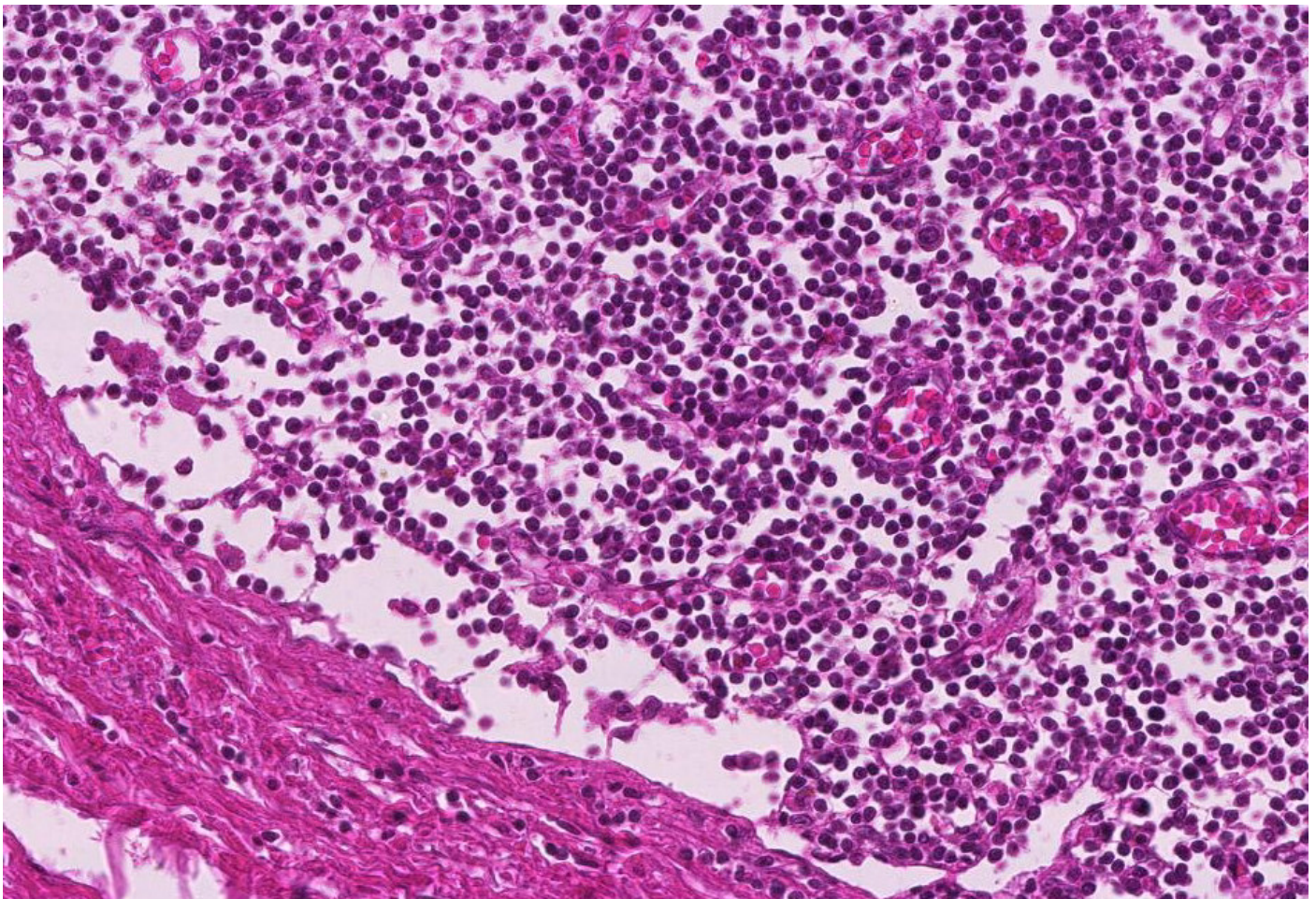
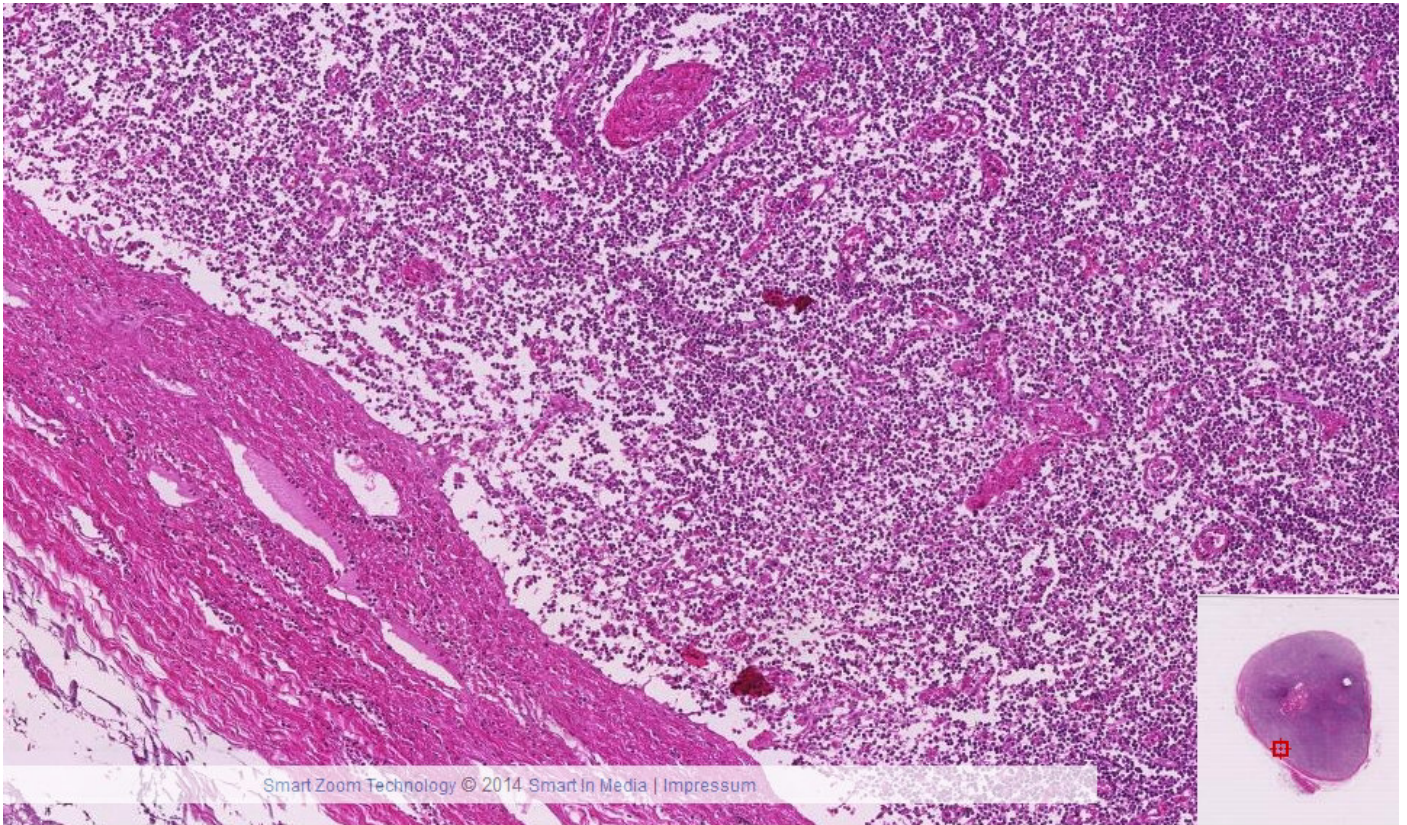


X-3 Morbus-Hodgkin, Lymphogranulomatose (Lymphknoten)

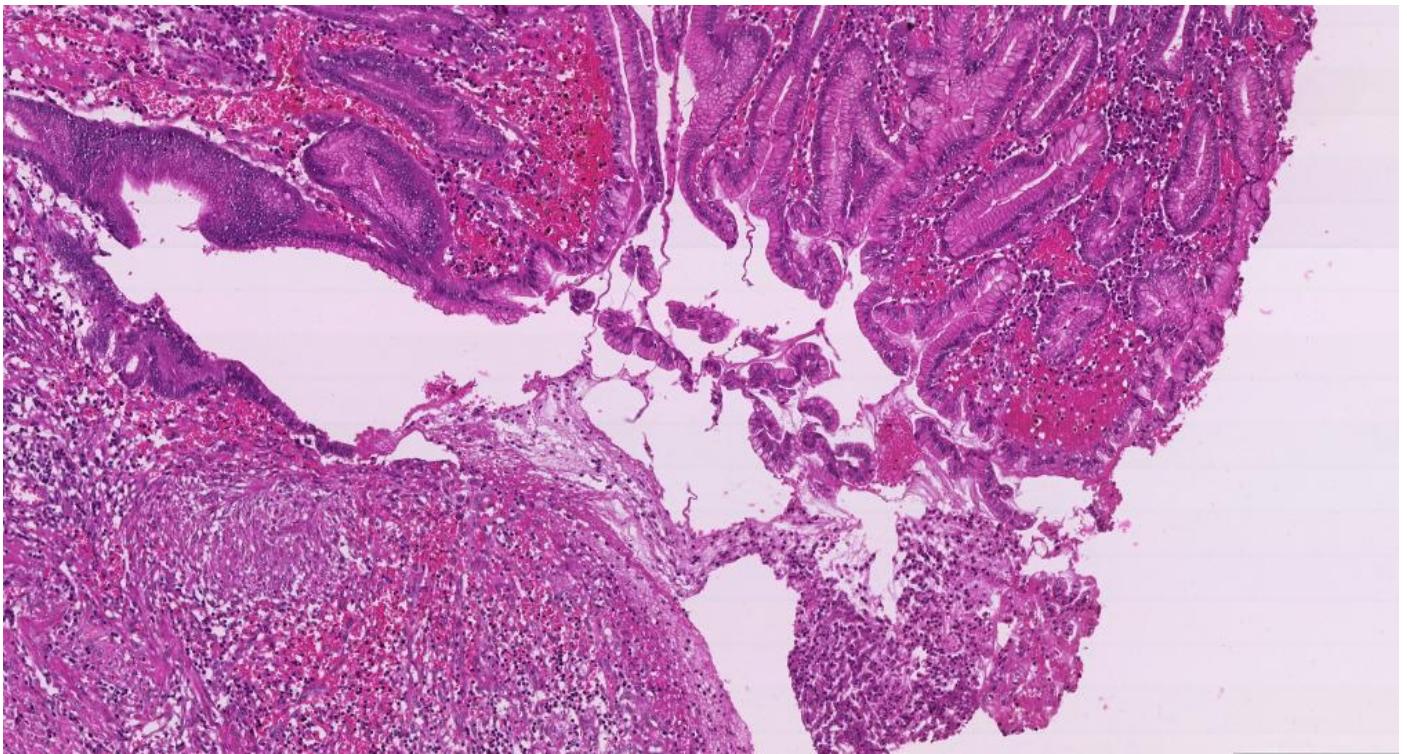


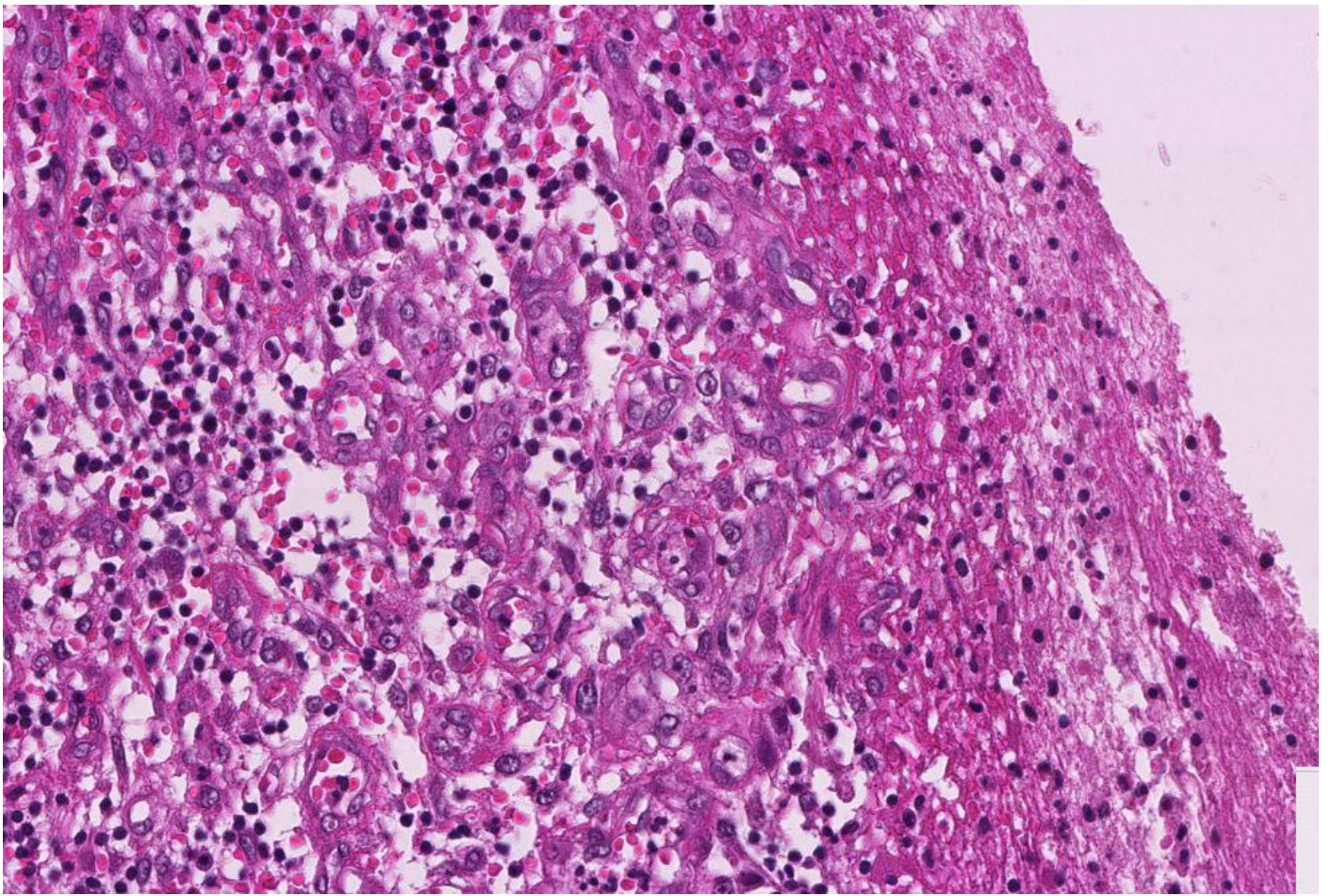


X -4 Chron. Lymphatische Leukämie, malignes Non-Hodgkin-Lymphom



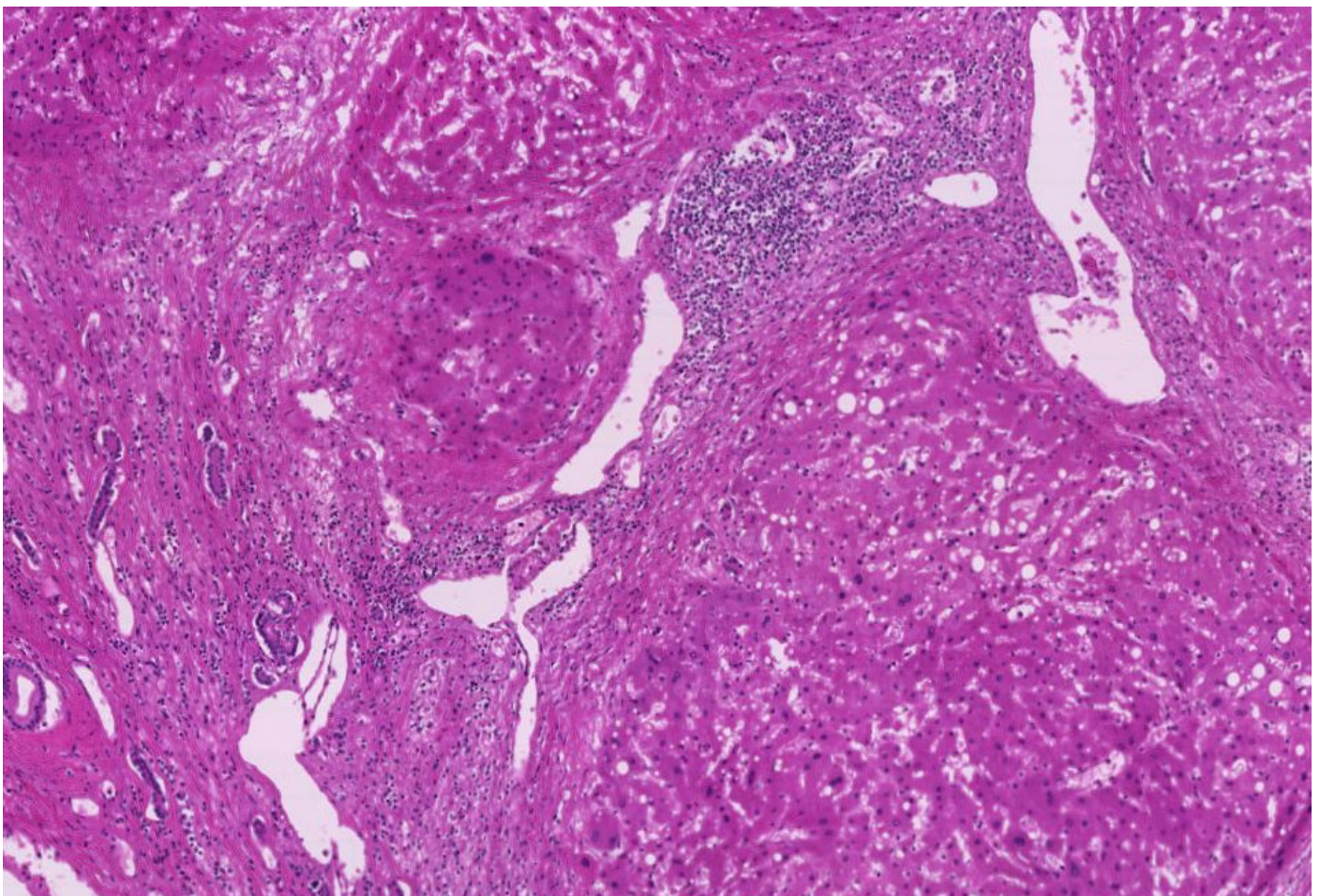
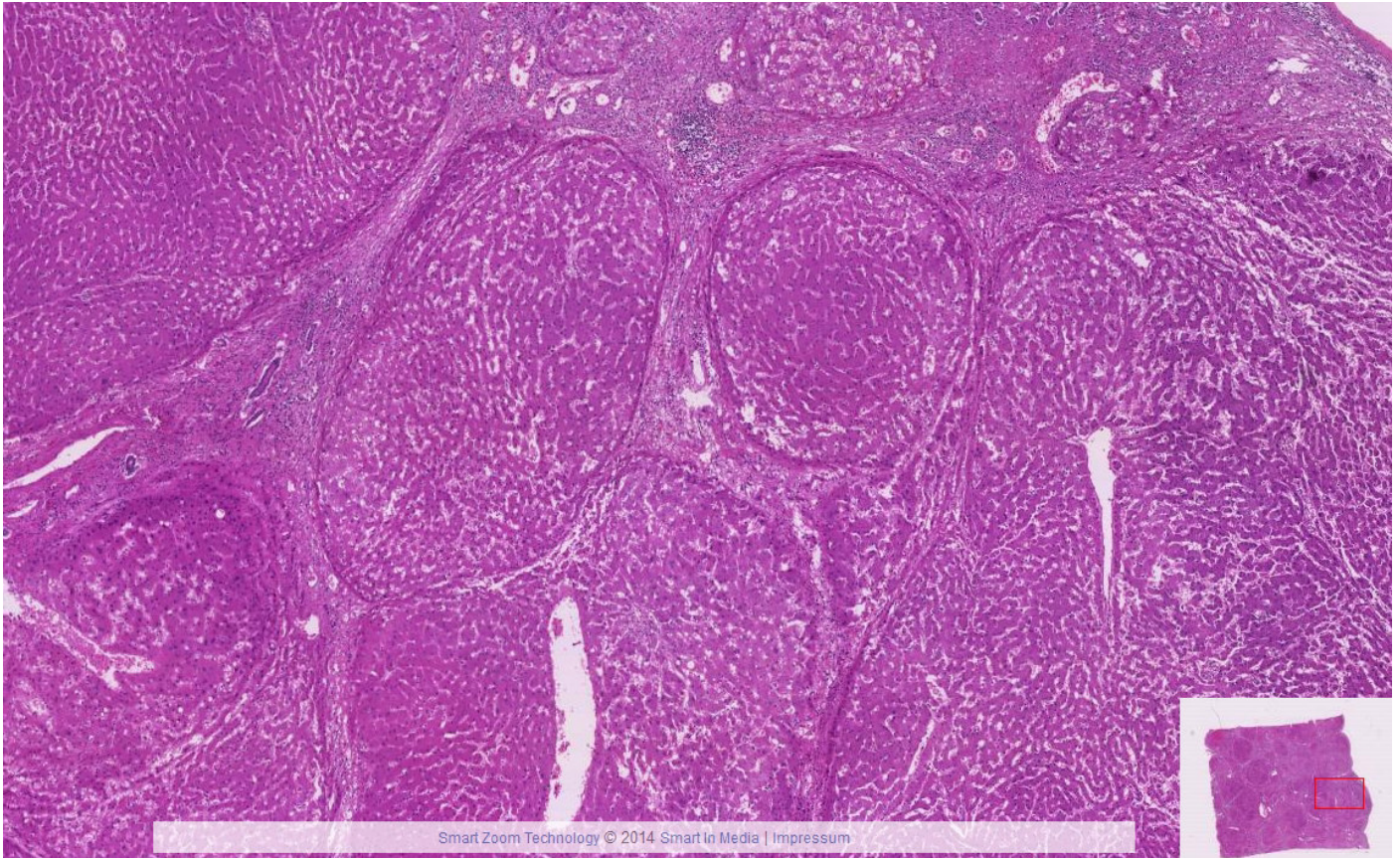
X-5 Chronisches Ulcus (Magen)





X-6

Leberzirrhose



X-7 Soor(Ösophagus)

